

User Manual



- Please read the User Manual carefully before using.
- Please use this product in a proper manner.
- Keep this manual properly after reading it.
- Tiny carbon particles may appear when the machine is used for the first time. This is a common phenomenon. Allow the water to flow for one minute and you can drink the water safely when there are no carbon particles.

■ Important things to note when using	1
■ Name of various parts and accessories	2
■ How to change and install the valve	3
■ Control panel	4
■ LCD Indicator	5
■ How Alkaline water is produced	5
■ Settings	6
■ Cleansing the electrodes and changing the filter element	7
■ Introduction to calcium ion water	8
■ Way to healthy food and drinks	9
■ Troubleshooting	10
■ Main specifications	11

●●●■ IMPORTANT THINGS TO NOTE WHEN USING

Please read the instructions carefully when using the Electrolytic Alkaline Calcium Ionizer and observe the instructions during use to avoid damage to the ionizer or affect the health of your family.

Do not use well water or underground water which is murky or which may be polluted by heavy metal.



Do not connect the ionizer to hot water sources or allow water with a temperature of more than 40°C to flow through it. Avoid high temperatures and keep away from direct sunlight.

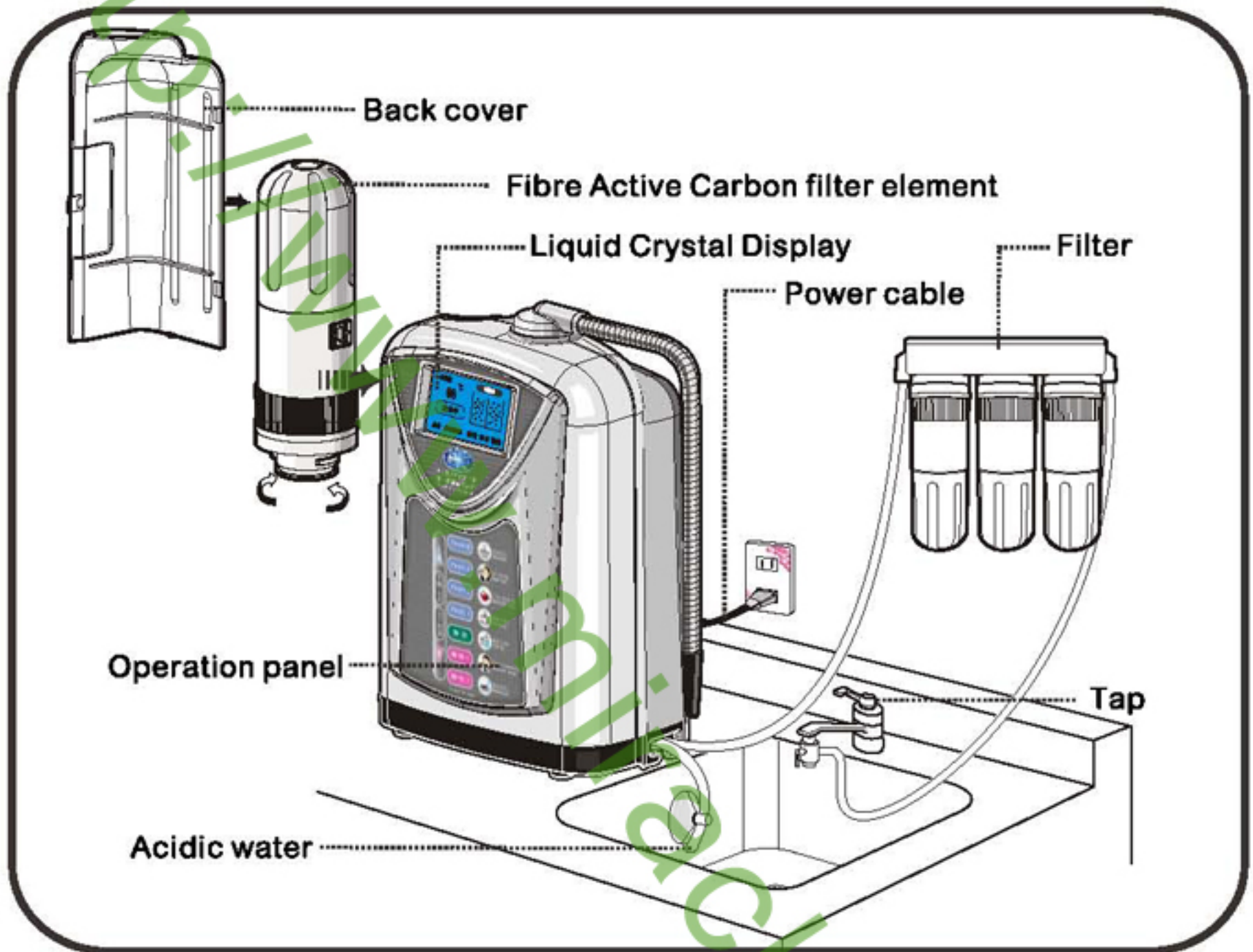


Do not wash the casing directly and avoid using alcohol or other volatile solvents to cleanse the casing. Use a soft cloth or a piece of cloth dipped in soap water to lightly cleanse it.


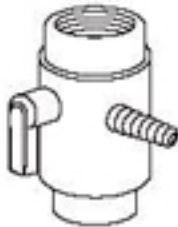










- Release the water for 2~3 minutes each morning.
- Do not use aluminium or copper utensils to avoid chemical reaction.
- Do not store alkaline water for too long. (Maximum of two days storage in the refrigerator and one day under normal room temperature in air tight containers).
- Avoid high temperatures and direct sunlight.
- Do not wash the casing of the Ionizer with water.
- Do not obstruct, bend or break the output tube and drainage tube.
- Do not hang up the acidic water tube during use so that waste water may flow out easily.
- Please remove the plug from the power source when the device is not in use for long period of time.
- Do not use the water for rearing goldfish or tropical fish to avoid ecologic changes and kill the fish.
- Do not take medication with alkaline ionic water.
- Those without acidic problems should not consume alkaline ionic water.
- Those suffering from physical weakness, hepatic and renal ailments and those who are currently under medical or dental care should consult their physician or pharmacist before consuming alkaline water.
- Acidic water is to be used externally for beauty and washing purposes only (Do not drink).
- Do not disassemble the Ionizer by yourself.

NAME OF VARIOUS PARTS AND ACCESSORIES

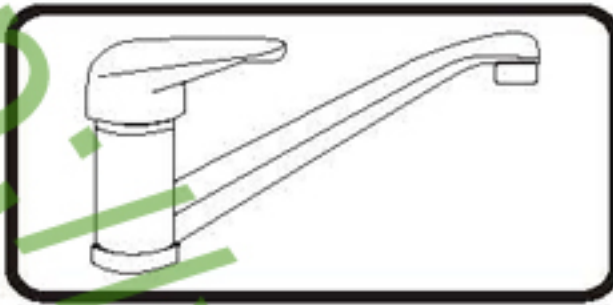


ACCESSORIES

Tap accessories		Ionizer accessories		
Top assembly 	Adaptor 	Rubber tube clip x 2 	Ph tester 5 ml 	Water inlet, disposal tube 
Double threaded joint 	Washer x 2 	Outlet tube 	Suction cup for fixing position of disposal tube 	Hanger (Optional item) 

HOW TO CHANGE AND INSTALL THE VALVE

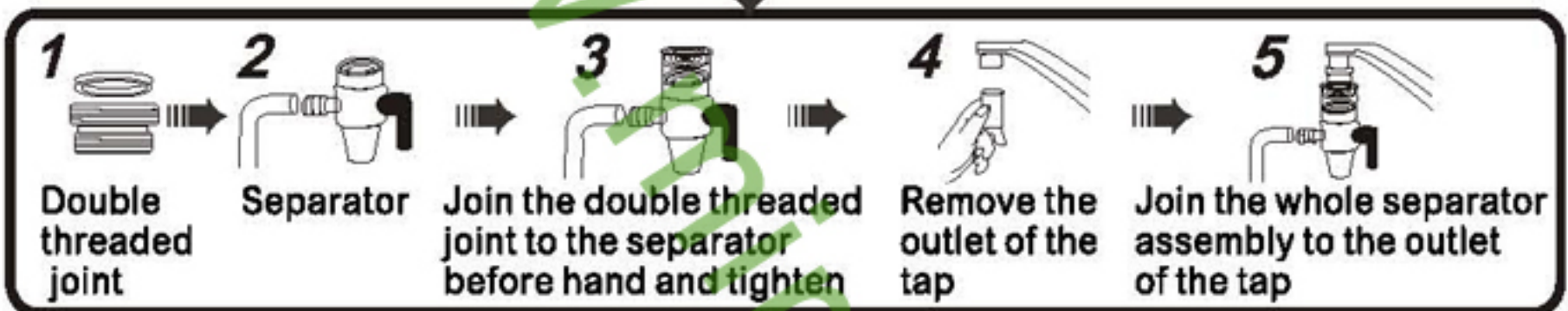
A



If the tap you have is of the European or American type (as shown in left diagram)

■ If there are internal screw threads on the tap (Diagram 1 below), the installation is as follows:

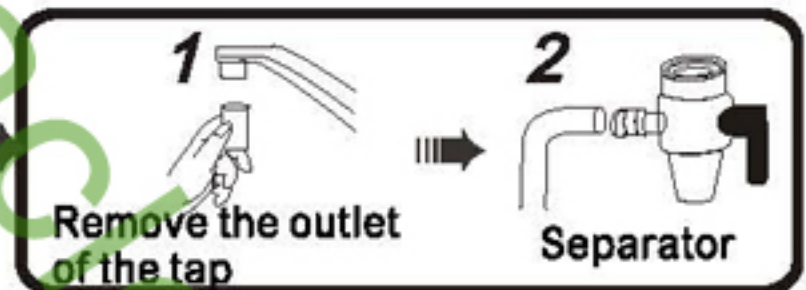
- Join the double threaded joint to the separator and tighten it. (Steps 1, 2, 3)
- Unfasten the outlet of the tap. (Step 4)
- Join the whole separator assembly to the outlet of the tap and tighten it. (Step 5)
- The valve handle may be set to turn to the left or to the right according to One's convenience.



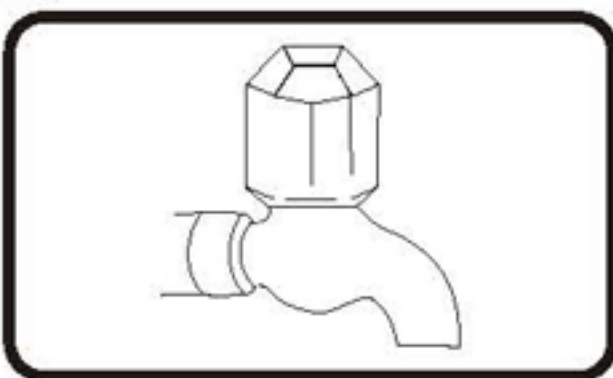
■ If there are external screw threads on the tap (diagram 2 on the right), the installation is as follows

Just remove the outlet of the tap and fasten the valve.

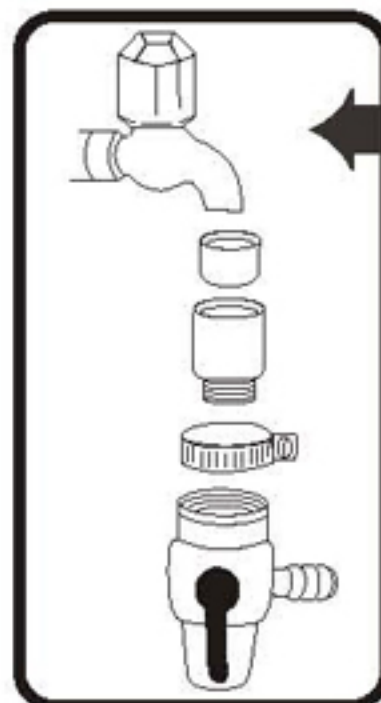
If there are leaks, turn it slightly as shown in the diagram until the leak stops. Ensure that the washer has been inserted before tightening.



B



If the tap you have is of the Taiwanese type (as shown above)



Installation procedure: (As shown on the left)

- Fix the installation ring first.
- Use the internal ring set and affix it to the tap.
- Tighten with a wrench.
- Finally, affix the valve.

CONTROL PANEL

The lights on the panel will switch off automatically approximately one minute (energy saving installation) after production of ionized water is stopped or when the stop button is pressed.

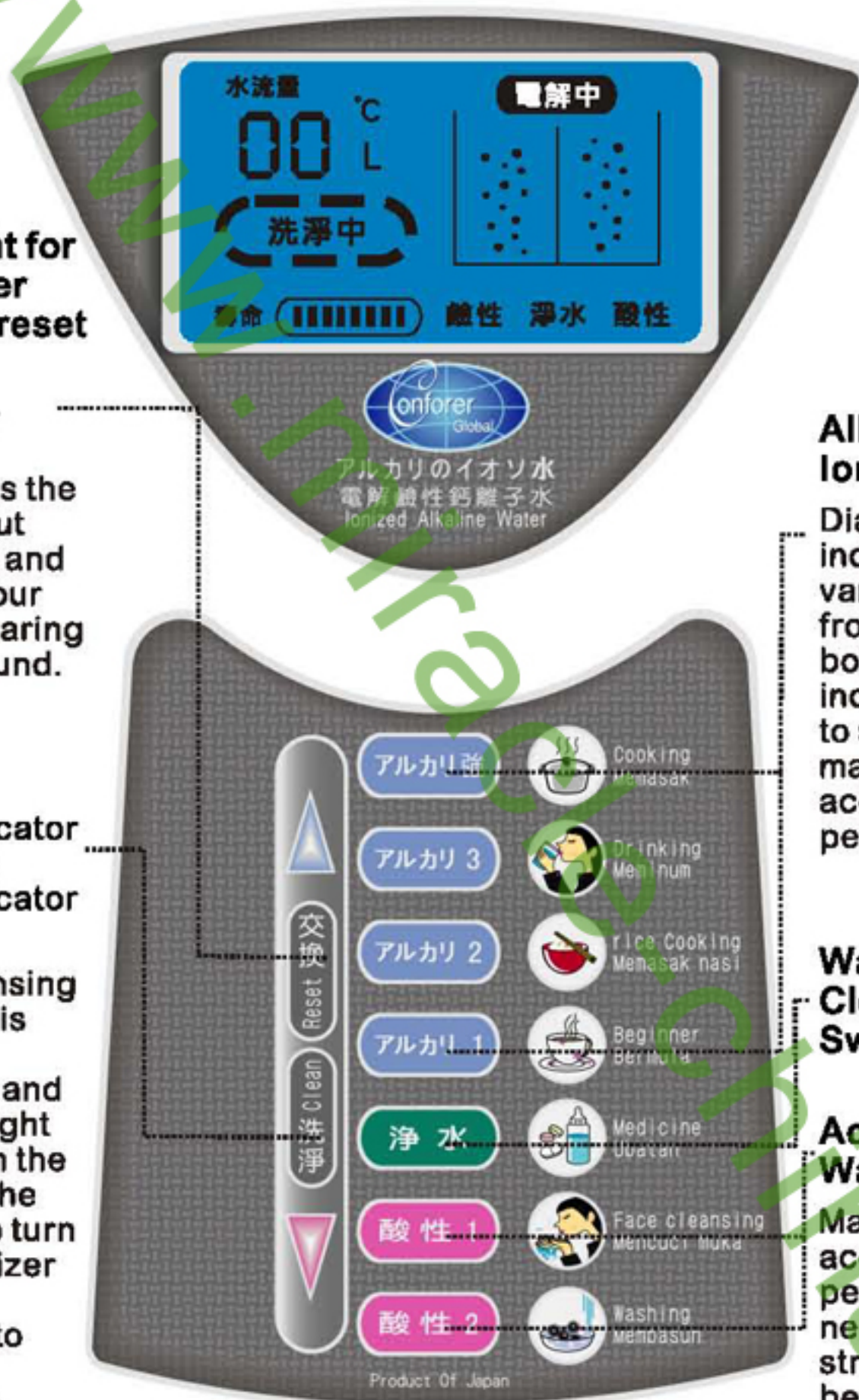
Indicator light for changing filter element and reset button

When the filter element is changed, press the button for about three seconds and only release your finger upon hearing a "beep" sound.

Cleansing

Electrode cleansing indicator light and extra cleansing indicator light

when the cleansing indicator light is on, press the "clean" button and the indicator light will flash. When the light goes off, the sound will also turn off and the ionizer will be reset automatically to normal mode indicating that cleansing be completed



Alkaline Ionic Water

Diagrams indicating various stages, from top to bottom, indicating weak to strong and may be adjusted according to personal needs.

Water Cleansing Switch

Acidic Ionic Water

May be adjusted according to personal needs, weak to strong and may be adjusted according to personal needs.

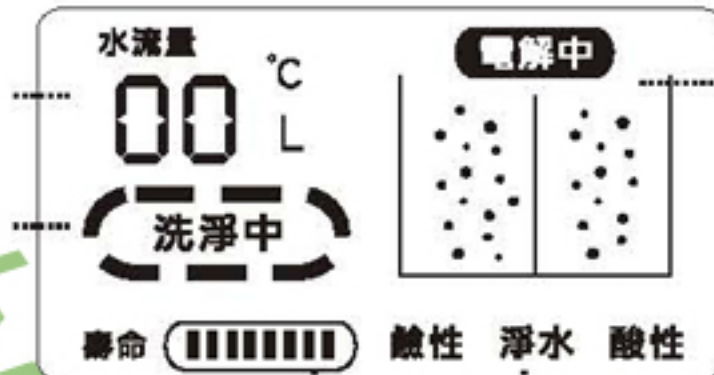
LCD Indicator Panel

Shows the current flow and current temperature

Automatic cleansing when electrolysis is commenced.

Indicator panel will show counter current water flow during cleansing. Normal current water flow will be indicated during electrolysis.

Maximum flow is 6000 liters and it should be checked and changed according to the rate of use.



Degree of electrolysis can be determined from the speed of bubble production on the screen.

The light on the indicator panel will go off approximately 1 minute after the ionizer is turned off (energy saving installation).

Alkaline, cleansing, acidic indicator

PRODUCTION OF ALKALINE WATER

アルカリ 3

Production of alkaline water: When the tap is turned on, water enters the ionizer. The indicator light will light up and three "beeps" will be heard. The alkaline light will light up and you may select different levels of 1, 2, 3, 4 for different pH values. When the light turns violet, it indicates strong alkaline condition while blue indicates normal alkaline.

浄水

Production of purify water when the purify water button is pressed, water will enter the ionizer and three 'beep' will be heard. There will be no ionizer of either alkaline or acidic water (background light turns green) light turns off 1 minutes after water supply is turned off and the ionizer automatically switches to alkaline mode.

酸性

Production of acidic water: When the acidic switch is pressed, water enters the ionizer and a continuous beep will be heard (background light turns red). The acidic light will light up and you may select different levels of PH values. Light turns off 1 minute after water supply is turned off and the ionizer automatically switches to alkaline mode. (A beeping sound will be heard when the ionizer is in acidic mode to remind you not to drink the water.)

Note



The computer within the ionizer will carry out automatic cleansing internally when it is in alkaline mode. The background light will turn off upon completion to save energy.

When the electrode cleansing light is on, turn on the tap (Start button) and the cleansing light will blink and the music is turned on. The ionizer will automatically switch to alkaline mode about one minute after cleansing is completed.

FUNCTIONS



A Electrolytic intensity setting

Internal setting should be done in Standby Mode (with power on but with tap off)

Instructions:

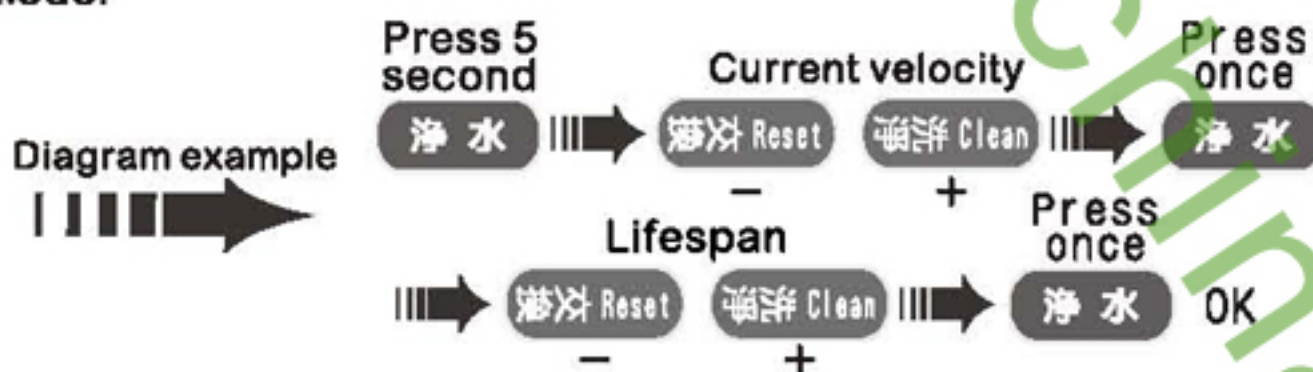
- Press the “Alkaline switch” for 5 seconds and the LCD display will light up. The top left hand corner will show the electrolytic intensity at 3 different levels: 00 (low), 01 (medium) and 02 (high). This should be set according to the difference in the quality of water in different places.
- For solubility below 120 set at 02 (high)
- For solubility between 120-200 set at 01 (medium)
- For solubility above 200 set at 00 (low)

B To increase cleansing and prolong the lifespan of the filter element

Internal setting should be done in Standby Mode (with power on but with tap off)

Instructions:

1. Press the “Clean Water Switch” for 5 seconds and the top left hand corner of the LCD display will show the flow value (This should be set according to the difference in the quality of water in different places.)
2. Press the “Clean⁺” or “Reset⁻” switch to make the adjustments. Settings range from 30L~90L (manual), EL (Auto). Automatic cleansing light will light up, Indicating extra cleansing on the 11th time after the 10th usage.
3. Press the “Clean Water Switch” once again after completion of setting to adjust the “lifespan”
4. Press the “Clean⁺” or “Reset⁻” switch to set the lifespan of the filter element. Settings range from 03L~12L. Press the “Clean Water Switch” once again after completion of setting to resume normal operation. indicate normal Mode.



Note ⚠ 1L is equivalent to 1000 litres for the lifespan setting. 1L is equivalent to 10 litres for the flow setting.

REPLACING THE ELECTRODES AND FILTER ELEMENT

■ Cleansing the Electrodes



Manual switch for extra cleansing

Turn on the tap when the cleansing light is on and the light will blink. When the light stops blinking and the music is turned off, the built-in computer will automatically switch to normal mode after cleansing.

Electrode cleansing indicator light

■ Replacing the filter element



When replacement of the filter element is complete, press the filter element switch for 5 seconds. Setting is complete when the lifespan indicator is reset.



When the lifespan indicator panel is empty, it indicates that the filter element has exceeded its lifespan and needs immediate replacement to ensure proper electrolysis and the quality of the water produced.

■ Changing the filter element

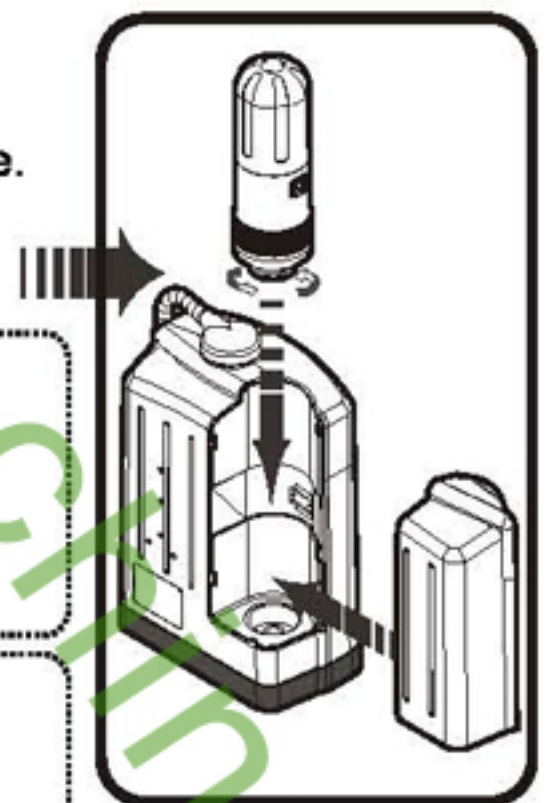
- Disconnect the power supply and turn off the tap.
- Open the back cover.
- Remove the filter element and replace it with a new one. Ensure that the filter element is properly positioned.
- Tighten the filter element and replace the back cover.

Note

It is necessary to ensure that the filter element is properly fixed and tightened to ensure proper functioning of the Ionizer. Use only designated filter elements to ensure proper functioning of the Ionizer.

Suggestion

- Use tap water as water source.
- The lifespan of the Ionizer and the filter element may be prolonged by adding pre-filters at the expense of the user due to differences in the quality of water in different areas.



INFORMATION ON CALCIUM IONIC WATER



Advantages of consuming alkaline ionic water

- **Makes the skin more lustrous and elastic**
Apart from the urine, water is also released through the skin. If water is not replenished, the skin dries up slowly, ageing and wrinkles are formed.
- **Tranquillizing**
Alkaline calcium ionic water helps to remove waste matters from the body. It prevents hardening of arteries and regulates the bowels. It also calms down nerves and tranquillizes. One becomes irritated if water is not replenished when feels thirsty and cells become weak when there is a shortage of water supply.
- **Promotes intestinal peristalsis and bowel movement**
Drink 500 c.c. of alkaline calcium ionic water upon waking up to improve peristalsis of the digestive system and to stimulate it and promote bowel movement.
- **Prevents gout and arthritis**
Uric acid is a metabolic waste within the human body and is excreted through the sweat, urine and feces. If there is a deficiency of water, the concentration of uric acid in the blood increases and accumulate in the joints, causing gout and arthritis while accelerating ageing of the joints. Alkaline calcium ionic water neutralizes the uric acid and excretes it through the urine and feces.
- **Prevents kidney stones**
Most people do not go to the toilet at night. Urine production is low for eight hours at night, resulting in high concentration of the urine during sleep. Stones in the urethra form at this time. If 300 c.c. of alkaline calcium ionic water is drunk thirty minutes before bed, it dilutes the urine and reduces chances of contracting kidney stones. neutralizes the uric acid and excretes it through the urine and feces.

USES OF ACIDIC IONIC WATER

- **Beauty**
 - Possesses astringent effects. Add 2~3 cups of acidic ionic water to the bath to smoothen skin and for beauty effects.
 - Good effects when used after shaving.
- **Cleansing**
 - May be used as a gargle and for preventing athlete's foot.
 - Acidic ionic water cleanses and disinfects. It may be used to cleanse cooking utensils, crockery and chopping boards and is good for disinfecting and washing tablecloth.

It is said that maintaining slight alkalinity in the human body is ideal for health. If the human body tends towards the acidic end, cells within the body changes, the various systems becomes weak, metabolism slows down, waste is not easily removed and the burden on the liver and kidneys is increased. These will result in the development of various types of chronic ailments. Acidic bodies are also susceptible to ageing, fatigue, stress, anxiety, insomnia and other pressures. On the other hand, those with alkaline bodies are able to remove metabolic wastes easily, reducing the burden of the various organs and stay healthy, and even when they fall ill, they recover quickly.

One will feel more lively if one is able to maintain slight alkalinity in the body. Of course what determines the pH of one's body is the food and water that one consumes. Food may be divided into highly acidic, acidic, alkaline, highly alkaline, and neutral. However, most delicious food are acidic in nature.

The following are acidic and alkaline food:

Acidic food:

Egg yolk, rice, sugar, beef, pork, chicken, beer, whisky, wine, salmon, eel, fish eggs, cuttlefish, noodles, oyster, bread, cheese, etc.

Alkaline food:

Spinach, cucumber, mushrooms, carrot, onions, cabbage, tomatoes, potatoes, seaweed, milk, lemon, sour plum, etc.

Normally, a balanced diet should consist of 3 parts of alkaline food and 1 part of acidic food.

Those with acidic bodies are prone to illness

Food turns into acid upon decomposition in the body. For example, proteins turn into phosphoric acid and fats into butyric acid, acetic acid, lactic acid and gluconic acid which turns into lactic acid after utilization by muscles. These metabolic wastes and toxins produced by the body are acidic and it is necessary to neutralize them with alkaline substances such calcium, sodium and potassium. In this respect, calcium is most important and calcium ions are cations and they are usually found in the unstable free ionic form; always on the lookout to pair up with anions. When acids combine with calcium, they become neutral and harmless substances which are then expelled from the body.

Thus, pH of the body determines health and diet determines the pH of the body. It is only by improving our diet and the water we drink that one may enjoy good health..



Problem	Reason and how to handle problem
<p>Green light does not turn on during production (indicating no electrolysis)</p>	<ul style="list-style-type: none"> • Water pressure too low, as a result ionizer does not function properly. Additional pump has to be fixed. • Check to see if the filter element is properly fixed. Improper installation of filter element results in malfunction of ionizer. • Straighten the outlet tube.
<p>Improper output of ionic water or clean water</p>	<ul style="list-style-type: none"> • Is it time to change the filter element? (filter element may be purchased from dealers) • Is the tap turned on full? Turn on tap. • Cleansing indicator light does not light up? Please carry out cleansing.
<p>Chalky alkaline ionic water is produced</p>	<p>It is normal for the alkaline ionic water produced to be slightly chalky. This is due to the air bubbles present in the water. The water will become clear after a while and it is alright to drink the water.</p>
<p>Brown colour particles present in the ionic water</p>	<p>The brown colour is probably due to the presence of small amounts of iron and it is harmless. Reduce the alkalinity level.</p>
<p>White precipitate floats on alkaline ionic water when stored or a thin film appears in the internal wall</p>	<ul style="list-style-type: none"> • This is a reaction between calcium ions and carbonic acid in the air, resulting in crystallization (solid calcium particles). It is alright to drink the Water. • The thin film is solid calcium. Wash it off with Vinegar.
<p>When the ionizer is not used for long periods of time</p>	<p>Disconnect from the power supply and release water from the water outlet and the filter assembly.</p>
<p>Water output drops gradually</p>	<p>Possibly due to crystallization on the inner walls of the output tube, obstructing flow. Request for cleansing by our service personnel or purchase a new filter element from us.</p>

- To reduce crystallization, use the acidic water button and the cleansing button more frequently.
- Have your Ionizer cleansed annually to prolong the lifespan of the electrodes and for proper functioning of the unit.

MAIN SPECIFICATIONS

Voltage	110V/60Hz (220V Specially ordered)		
Dimensions (mm)	H310xW220xD125	Power consumption	app.320W (Max)
Weight	app. 4.0kg	Power cord length	app. 9 ft
Water pressure	1.6.5kg/m	Output	1.3liters/min.
Electrodes	Hi-tech precise titanium-platinum alloy plates from Japan Precise ceramic ionic membrane from Japan		
Filter material	Carbon fibre filter element from Japan		
Electrolysis	Continuous electrolysis (built-in ammeter)		
Safety device	Fuse10A Circuit board: Overheating protection at 1A current Built-in thermostat protection for transformer		
Maximum temperature on continuous use	≤40°C		
Water cleansing device	Total Flow app 3000L~12000L Cleansing power 5.0L/min Free residual salt removal, foul odour removal—トリハロメタン		
Electrolysis	Ideal rate of water treatment 2L/min [Input pressure @ 0.1MPa (app. 1kgf/cm)] Output 3L/min [@0.2MPa input pressure (app. 2kgf/cm)] Electrolysis stages Alkaline 4 stages, Acidic 2 stages Continuous electrolysis time (Stages 1-2) app. 1 hour (stages 3-4) app. 30 min. Electrolytic cleansing Automatic cleansing each time water is turned on, cleansing alarm increased thereafter		

MIRACLE CO.,LTD

Address: Room B601 Hengsheng Building B , No. 205 Huanshi Zhong
Road Guangzhou China /POST NO.:510010

TEL:86-20-86673107 FAX:86-20-86672750

Email: admin@miracle-china.com

Skype: miracle-china

MSN:china.miracle@hotmail.com QQ:286372662

<http://www.miracle-china.cn>

www.miracle-china.cn